

supermod. *Cortez*

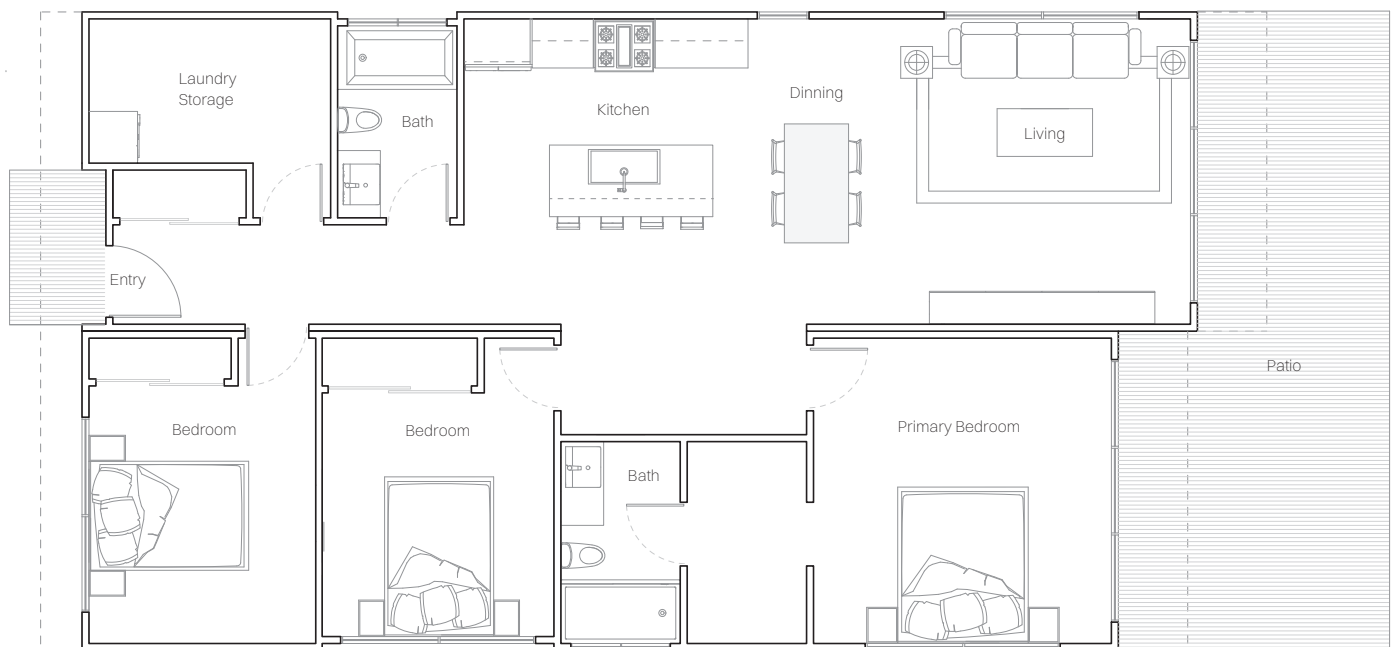
cortez.

The floor plan of our Cortez home ticks off all of the boxes. Complete with 3 spacious bedrooms, 2 full bathrooms, storage and laundry. Your primary bedroom has a walk in closet, 4 piece ensuite and oversized slider door to the outdoors. The open concept kitchen, dining and living with 9.5' ceilings compliment this Cortez layout.

Like all Supermod designs, Cortez comes with standard high end finishes including quartz counter tops, custom cabinets, 9 ft ceilings, oversized sliding glass doors and a heat recovery unit ensuring your home's temperature will stay consistent keeping



Click here for an immersive 360 experience





CORTAZ.

Specifications

3 Bedroom Laundry & Storage
2 Bathroom 1200 Square Feet

Features

Full Steel Framing Step 4 Energy Efficiency
High Ceilings Quartz Countertops
Oversized Sliding Doors Solar Ready

Options

Plumbing Fixtures Flooring Cabinets
Door Hardware Smart Home Countertops
Appliances Exterior Siding Tile

Supermod Design Studio

Come work with our in house Supermod design team and award-winning designers. With years of focused experience designing and building residential projects. Our expertise spans all construction types, combining amazing architecture with a commitment to efficient, healthy, and sustainable construction.



Cost Estimate

Starting At \$332,900
Site work - TBD
Transportation & Install - TBD

Contact

hello@supermod.com

hello@supermod.com