

supermod. *Maurelle*

maurelle

1900 Square Feet

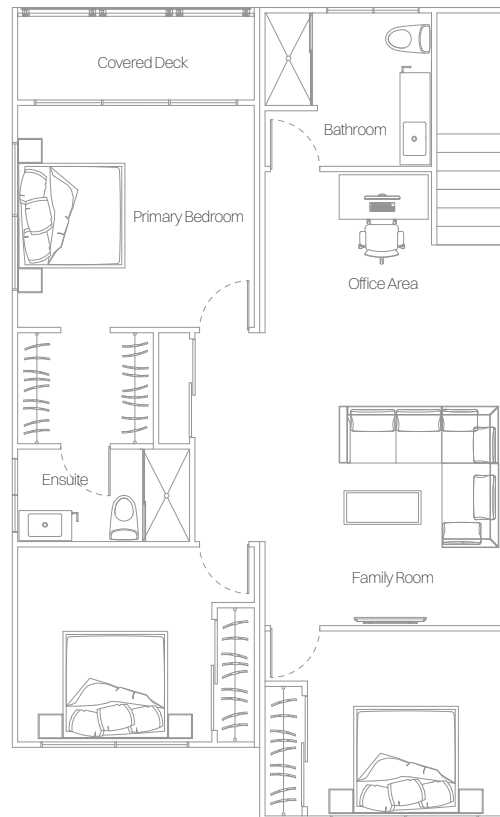
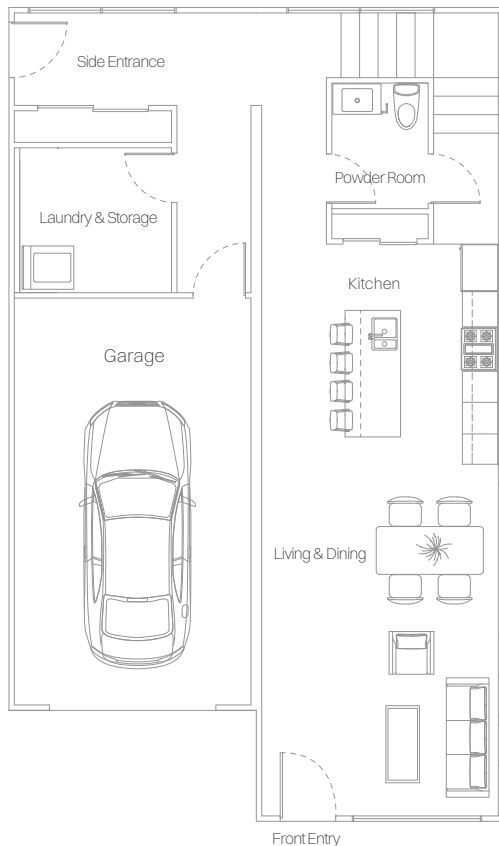
The floor plan of our Maurelle home will meet all of your needs. Complete with 3 spacious bedrooms, 2 full bathrooms, and a powder room. storage and laundry + full garage. Your primary bedroom has a walk in closet, 4 piece ensuite and Oversized Sliding Doors to your very own covered deck so you can enjoy it year round.

The open concept kitchen, dining and living compliment this Maurelle layout. Like all Supermod designs, Maurelle comes with standard premium finishes including quartz countertops with waterfall edge, custom cabinets, 9 ft ceilings, oversized sliding glass doors and a heat recovery unit ensuring your home's temperature will stay consistent keeping your annual costs down.

Supermods homes are built to the highest standards starting with a full steel frame that will last a lifetime.

 360° photo viewer

Click here for an immersive 360 experience





maurelle

Specifications

3 Bedroom Laundry & Storage
2.5 Bathroom 1900 Square Feet

Features

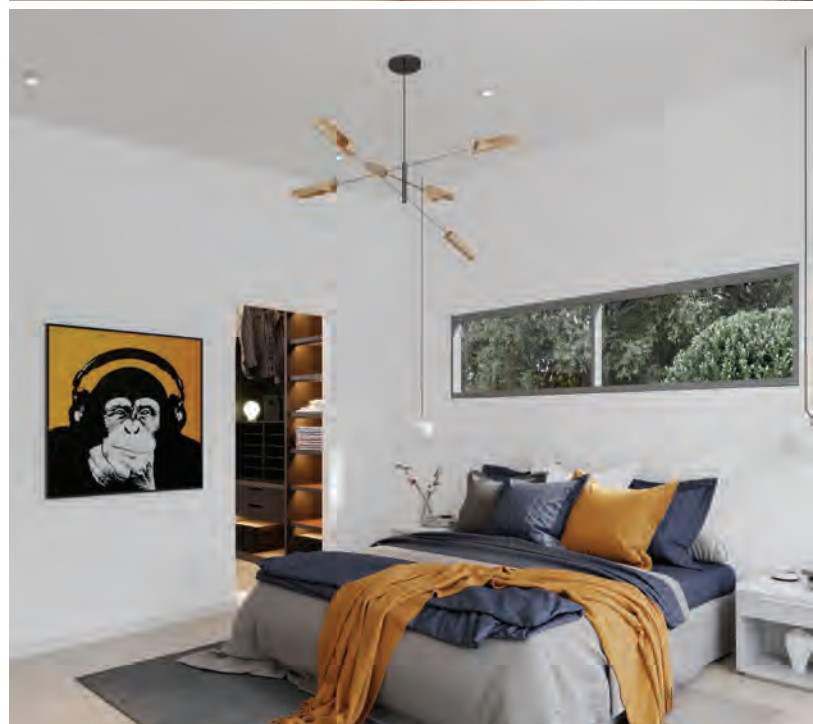
Full Steel Framing Step 4 Energy Efficiency
High Ceilings Quartz Countertops
Oversized Sliding Doors Solar Ready

Options

Plumbing Fixtures Flooring Cabinets
Door Hardware Smart Home Countertops
Appliances Exterior Siding Tile

Supermod Design Studio

Come work with our in house Supermod design team and award-winning designers. With years of focused experience designing and building residential projects. Our expertise spans all construction types, combining amazing architecture with a commitment to efficient, healthy, and sustainable construction.



Cost Estimate

Starting At \$449,900
Site work - TBD
Transportation & Install - TBD

Contact

hello@supermod.com

hello@supermod.com